

# RoBo-Sync™

Lock Actuated Tilt Latch System

Patent Pending



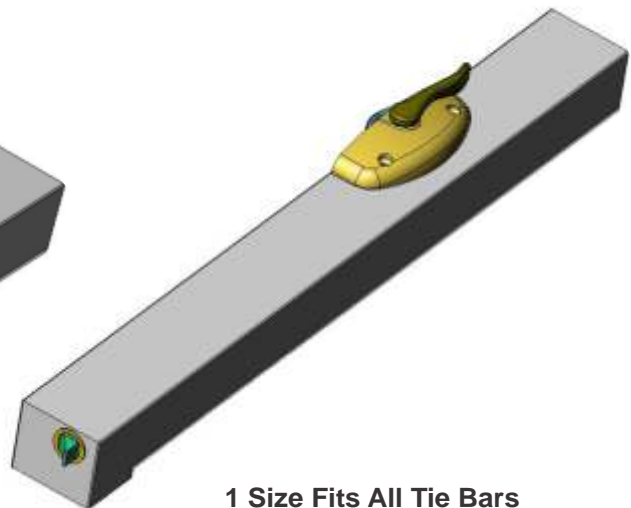
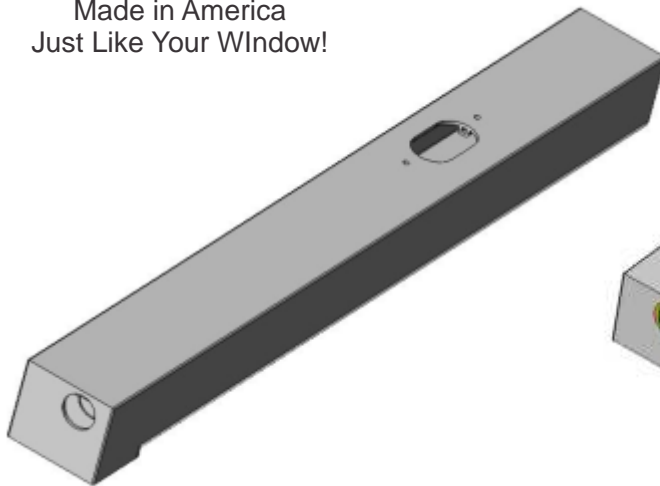
Lawrence Industries, Inc  
PO Box 1109  
Thomasville, NC 27361  
336-474-6754  
[www.lawrenceindustriesinc.com](http://www.lawrenceindustriesinc.com)

RoBo-Sync Technology allows  
Customers to Easily Lock, Unlock,  
and Retract Tilt Latches with  
One Control Point.

Robo-Sync is Designed with  
the Fabricator in mind.  
Installs Quickly  
and Precisely for a  
Great Looking Window!

Lead Free Bio-Maxx Composites  
are Clean and Green!

Made in America  
Just Like Your Window!



**Fits Most Existing Profiles**  
**Use Existing Fabrications**  
**Use Existing Keeper Setups**

**1 Size Fits All Tie Bars**  
**Self Locating Lock**  
**Anti Tilt Preventer**  
**Increased DP Ratings**

**Installs Quickly and Precisely**  
**Color Coded Components**  
**Pictographic Installation**  
**Made in USA**

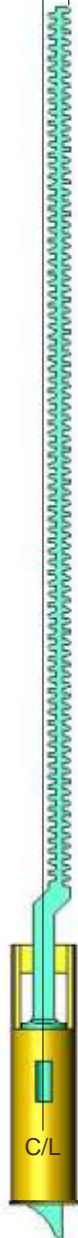


Lawrence Industries, Inc  
PO Box 1109  
Thomasville, NC 27361  
336-474-6754  
[www.lawrenceindustriesinc.com](http://www.lawrenceindustriesinc.com)

50-01 LH  
50-02 RH  
-.150"



50-03 LH  
50-04 RH  
+.170"



50-05 LH  
50-06 RH  
0



# RoBo-Sync™

Lock Actuated Tilt Latch System  
Patent Pending

## Tilt Latch Offset Guide:

#1 Offset- negative .150" for use with sashes that keep the Interlock intact without notching for keeper. Requires a Face Mount Keeper routed into Meeting Rail.

#2 Offset- "0" Gear Rack in Tilt Latch Center.

#3 Offset- Plus .170" for use where sash is notched for Top Mount Keeper or Face Mount Keeper.



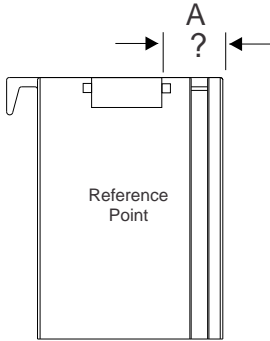
Lawrence Industries, Inc  
PO Box 1109  
Thomasville, NC 27361  
336-474-6754  
[www.lawrenceindustriesinc.com](http://www.lawrenceindustriesinc.com)

**Tilt Latch Drill Guide for  
Tilt Latch Placement  
in Vertical Stile:**

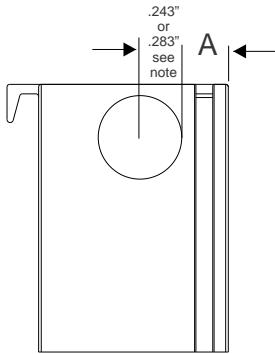
**RoBo-Sync™**

Lock Actuated Tilt Latch System

Patent Pending



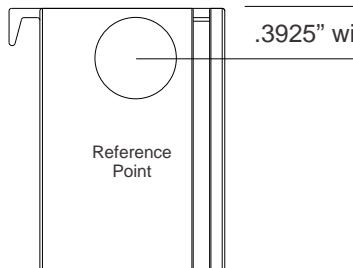
Measure from Flat Side of Tilt Latch  
engaging Jamb to Front Side of Sash.



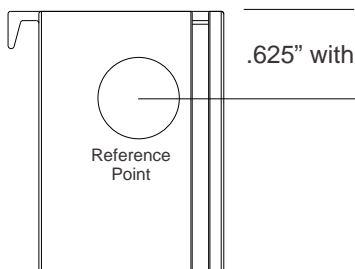
Mark over from front of sash A dimension  
plus .243". Mark Spot and Bore .625" dia  
x .500" Deep Hole.

*Note*+.040" Nose= .283" added to "A"

**Consult with Lawrence Representative  
for Best Choice**



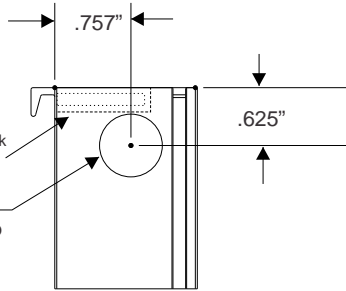
**High or Low Version can be Used  
with any Offset Gear.**



Lawrence Industries, Inc  
PO Box 1109  
Thomasville, NC 27361  
336-474-6754  
www.lawrenceindustriesinc.com

NOTE: Double Wall Stack  
Not to Exceed .250"

.625" Dia  
Bore .500" Deep



# RoBo-Sync™

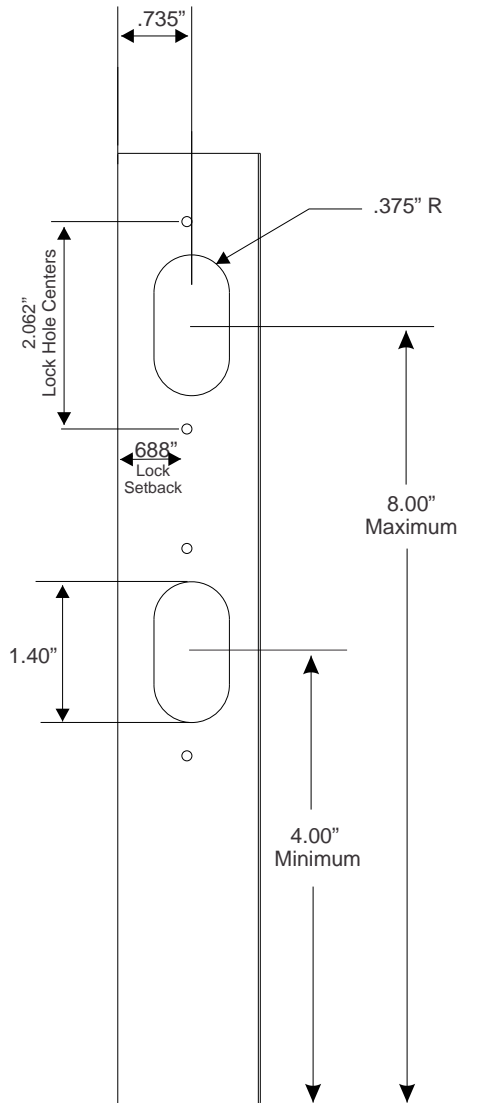
Lock Actuated Tilt Latch System

Patent Pending

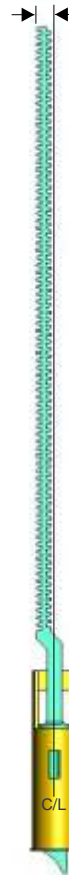
## No Interlock Removed Face Mount Keeper

50-01 LH shown

50-02 RH



50-01  
-.150"

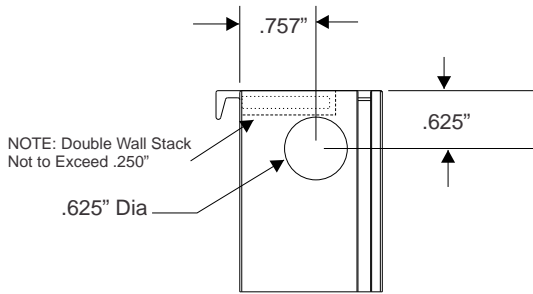


Lawrence Industries, Inc  
PO Box 1109  
Thomasville, NC 27361  
336-474-6754  
[www.lawrenceindustriesinc.com](http://www.lawrenceindustriesinc.com)

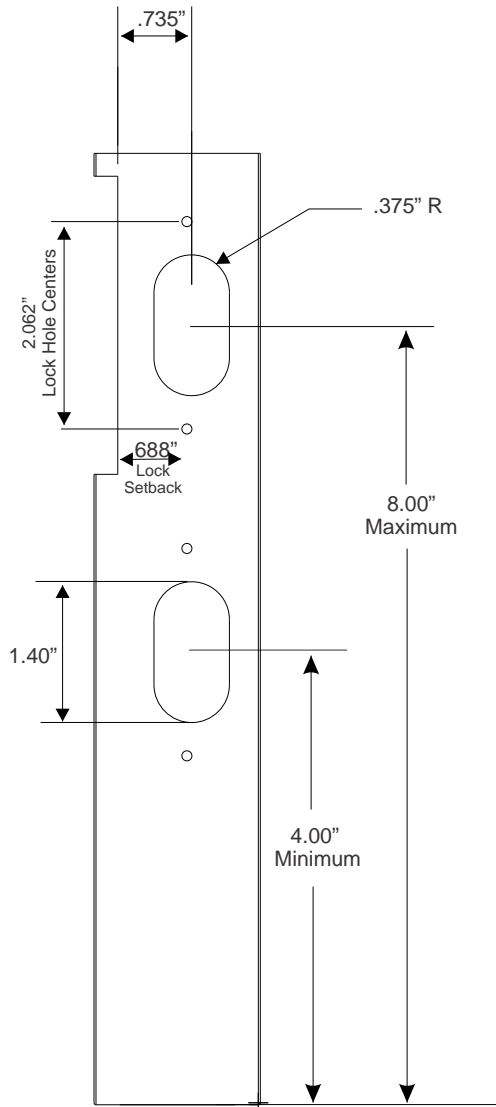
**Lawrence Industries, Inc.**

The Information Contained in this Document is the Sole Property of Lawrence Industries, Inc.. Any Reproduction in Part or as a Whole without the Written Permission of Lawrence Industries, Inc. is Prohibited.

RoBo-Sync Fab 09-19-12  
Do Not Scale



Low Version for use with Sashes that have  
Double Wall for Sash Lock screw insertion.



Lawrence Industries, Inc.

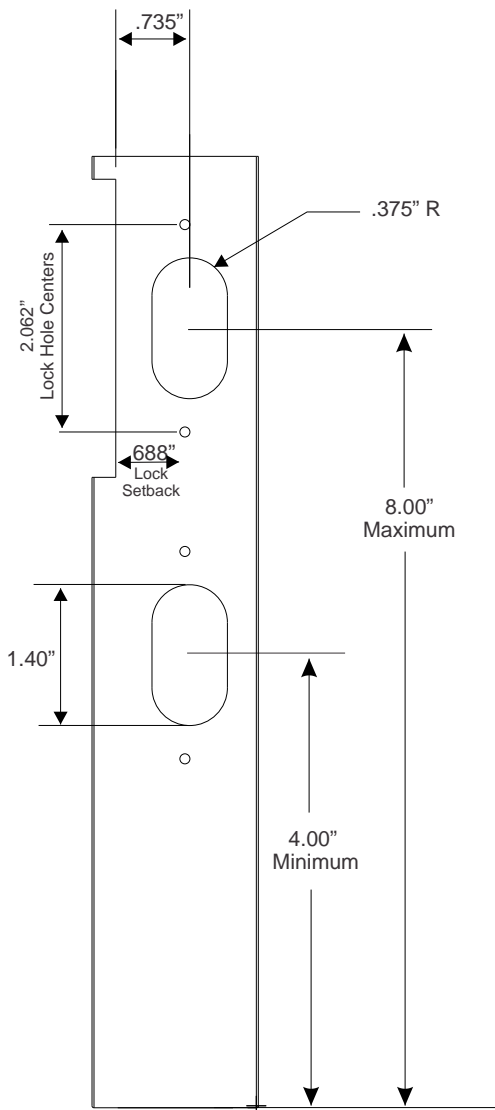
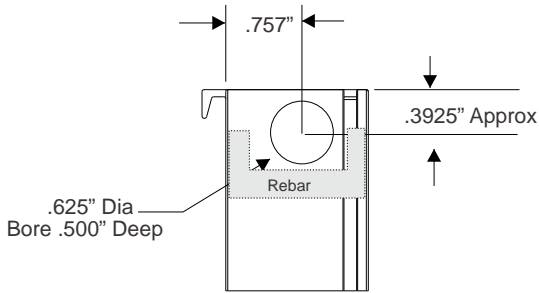
The Information Contained in this Document is the Sole Property of Lawrence Industries, Inc.. Any Reproduction in Part or as a Whole without the Written Permission of Lawrence Industries, Inc. is Prohibited.

RoBo-Sync Fab 09-19-12  
Do Not Scale

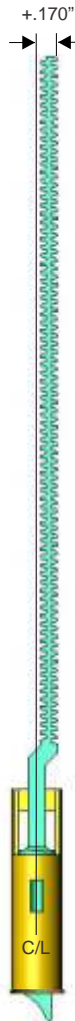
# RoBo-Sync™

High Version for use with Sashes that have Single Wall and Rebar for Screw Insertion.

Patent Pending



50-03 LH Shown  
50-04 RH



Lawrence Industries, Inc  
PO Box 1109  
Thomasville, NC 27361  
336-474-6754  
www.lawrenceindustriesinc.com

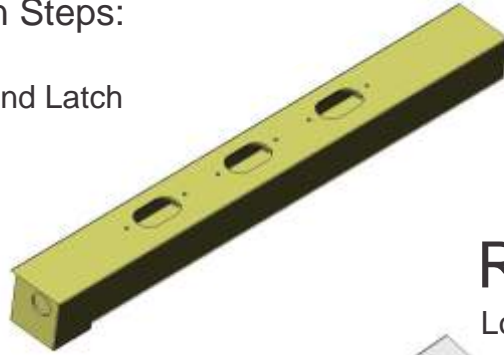
Lawrence Industries, Inc.

RoBo-Sync Fab 09-19-12  
Do Not Scale

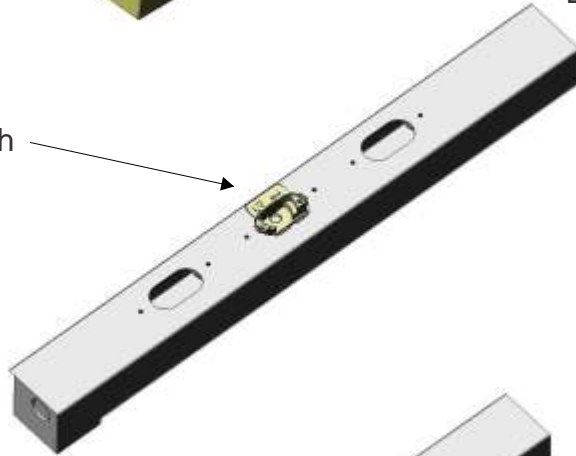
The Information Contained in this Document is the Sole Property of Lawrence Industries, Inc.. Any Reproduction in Part or as a Whole without the Written Permission of Lawrence Industries, Inc. is Prohibited.

## Installation Steps:

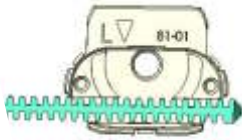
1) Drill and Mill Location for Lock and Latch



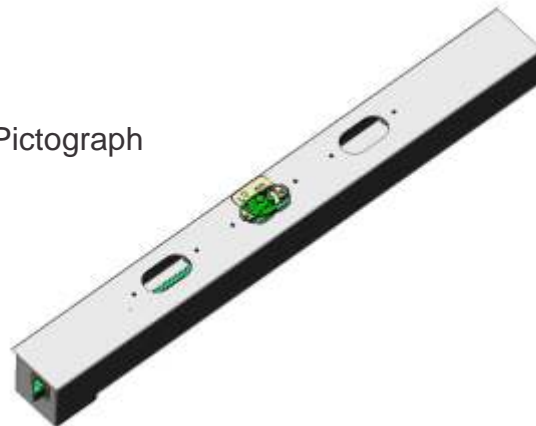
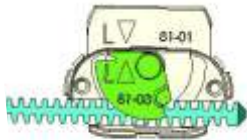
2) Insert Housing into Sash



3) Insert Tilt Latch Gear into Housing and Seat Behind Vinyl



4) Insert Cog aligning Triangle Pictograph



# RoBo-Sync™

Lock Actuated Tilt Latch System

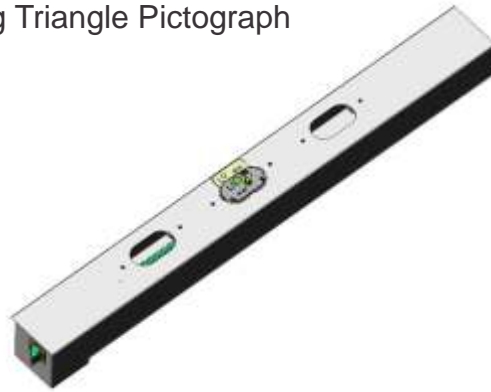
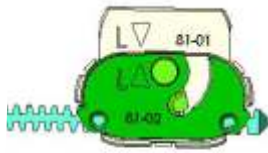
Patent Pending



Lawrence Industries, Inc  
PO Box 1109  
Thomasville, NC 27361  
336-474-6754  
[www.lawrenceindustriesinc.com](http://www.lawrenceindustriesinc.com)



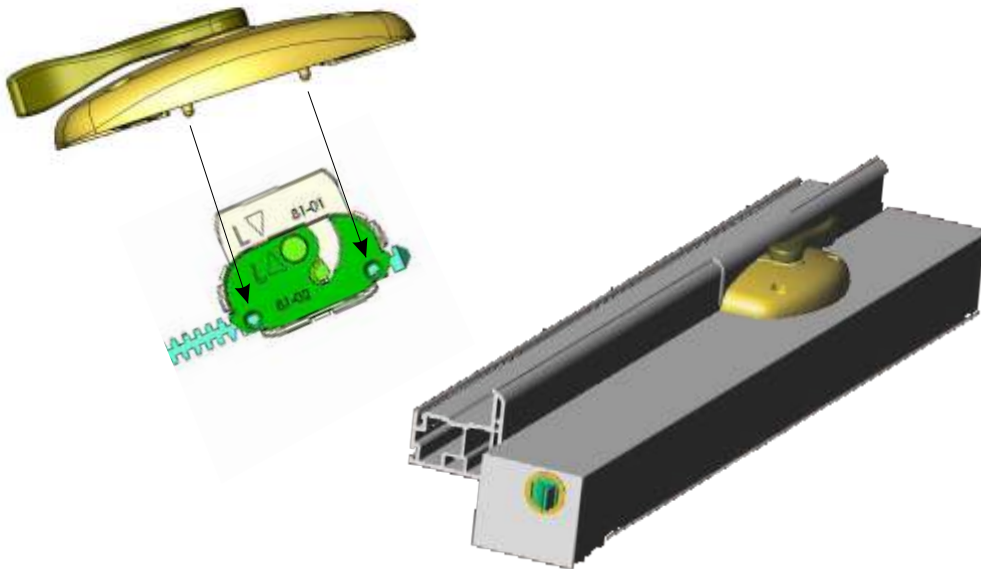
5) Insert Top Cover Cap aligning Triangle Pictograph



**RoBo-Sync™**  
Lock Actuated Tilt Latch System  
Patent Pending

*Tilts are now secure in sash and sash can be moved.*

6) Align Lock onto sash using pilot pins on lock and receiver holes in Housing Cover. Insert screws.



Lawrence Industries, Inc  
PO Box 1109  
Thomasville, NC 27361  
336-474-6754  
[www.lawrenceindustriesinc.com](http://www.lawrenceindustriesinc.com)

# RoBo-Sync™

Lock Actuated Tilt Latch System

Components List 02-05-13



Lawrence Industries, Inc  
PO Box 1109  
Thomasville, NC 27361  
336-474-6754  
www.lawrenceindustriesinc.com

<b>Lock</b>	10-00R-03	Short Throw Cam -.050" .688" x 2.060" setback
	11-01L-03	Short Throw Cam -.050" .688" x 2.060" setback
	10-02R-03	Standard Throw Cam .688" x 2.060" setback
	11-03L-03	Standard Throw Cam .688" x 2.060" setback
	10-04R-03	Extended Throw Cam +.050" .688" x 2.060" setback
	11-05L-03	Extended Throw Cam +.050" .688" x 2.060" setback

**Keeper Use Your Existing Top or Face Mount Keeper and Fab**

<b>Tilt Latch</b>	50-01	LH -.150"
	50-02	RH -.150"
	50-03	LH +.150"
	50-04	RH +.150"
	50-05	LH "0" offset
	50-06	RH "0" offset

<b>Housing High</b>	80-01	RH High Housing White
	80-02	RH High Cover Plate White
	80-03	RH Timing Cog White

<b>Housing High</b>	81-01	LH High Housing Gray
	81-02	LH High Cover Plate Gray
	81-03	LH Timing Cog

<b>Housing Deep</b>	82-01	RH Deep Housing White
	82-02	RH Deep Cover Plate White
	82-03	RH Deep Timing Cog

<b>Housing Deep</b>	83-01	LH Deep Housing Gray
	83-02	LH Deep Cover Plate Gray
	83-03	LH Deep Timing Cog

*Color Coded for Handed Assembly Items*